



GEOFABRICS®

Smarter Infrastructure

EROSION CONTROL

**Matting Installation
Guide**

BEFORE YOU BEGIN

Storage

Matting rolls should be stored in their original, unopened packaging. The designated storage area should be level, dry, well-drained, stable, and should protect the product from:

- Precipitation;
- Chemicals;
- Standing water;
- Excessive heat;
- Ultraviolet radiation;
- Vandalism and animals.

Biodegradable matting such as jute should not be exposed to moisture prior to installation as this can cause premature degradation. Damaged wrappers should immediately be repaired with weather resistant tape. Wrapping should only be removed from rolls immediately prior to installation.

What You'll Need On Site

Prior to commencement of installation the following equipment will be required:

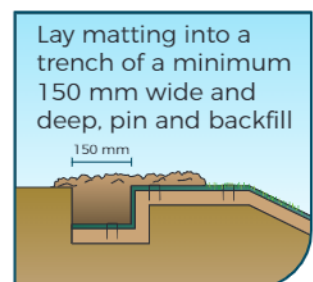
- Carpet knife, safety knife or scissors;
- Hammer or mallet;
- Spade or digger for trenching.

PREPARING THE SURFACE

- It is recommended that weed affected areas are sprayed with herbicide prior to mat installation.
- Excavate and trim slope to smooth profile, removing obstructions such as tree stumps or rubble and filling in any voids. The smoother the surface, the better contact between soil and matting.
- Excavate anchor trenches along the top edge as specified.
- Top soil is required to successfully grow grass and plants. Evenly spread top soil across the surface to required depth.
- All pre-seeding of the soil to be carried out prior to laying Grassroots and Biomac.

TRENCHING

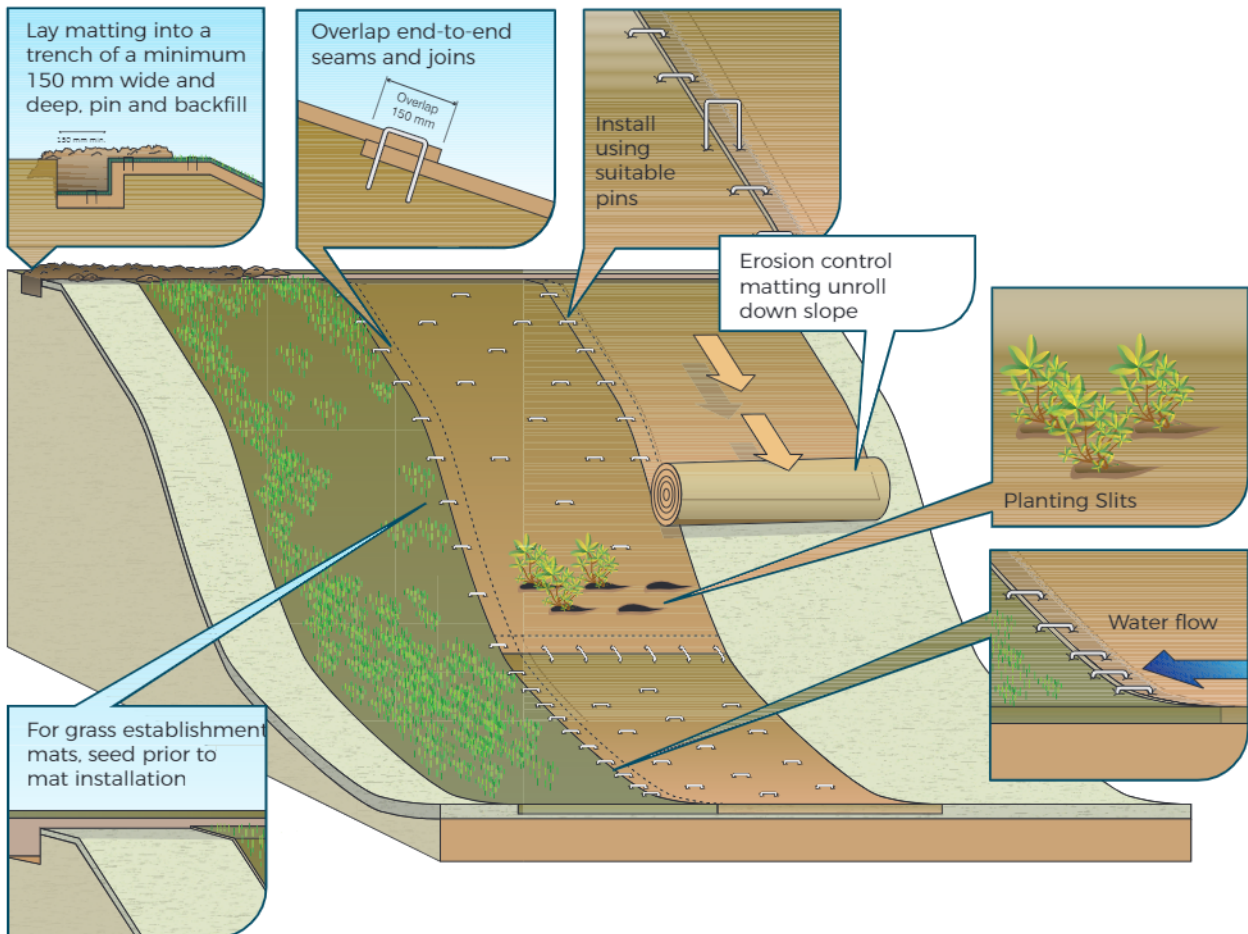
- A trench is necessary on gradients of 1:3 or steeper and in riparian or flood areas.
- Dig a trench at the top of the slope, minimum width and depth of 150 mm.
- Pin the end of the roll into the bottom of the trench at 300 mm intervals.
- Back-fill the trench and roll the matting down the slope with a minimum overlap of 150 mm.
- Pin material ensuring the overlaps are secured well.
- Trenches should be deeper for channels and slopes steeper than 1:1.



LAYING THE MATTING

The following instructions apply to all grades of Grassroots, Biomac and Jute.

- The material should be rolled from top to bottom of steep batters, as opposed to across the batter. The material may sag between fastening pins if laid across steep slopes.
- Minimum overlap of 150 mm is recommended. Overlaps should be pinned at 300 mm intervals.
- The matting should be laid down the flow line in swale drains. The leading edges should be trenched and overlaps must follow the flow line downstream.
- Sites subject to flooding require the laying pattern to mimic a fish-scale pattern. The material should be laid so that the leading edges are not exposed to water flow.
- Do not pull the material tightly across the soil surface. Allow it to contour to the soil profile and into undulations. This allows the material to settle and bond with the topsoil.
- If the site requires the matting to be laid across slopes, then the top edge should be trenched and pinned at a higher rate.



PLANTING

Grassroots & Biomac

Spread seed and fertiliser consistently over the topsoil prior to installation. Applying seed via a hydro-seeding machine is recommended for larger areas.

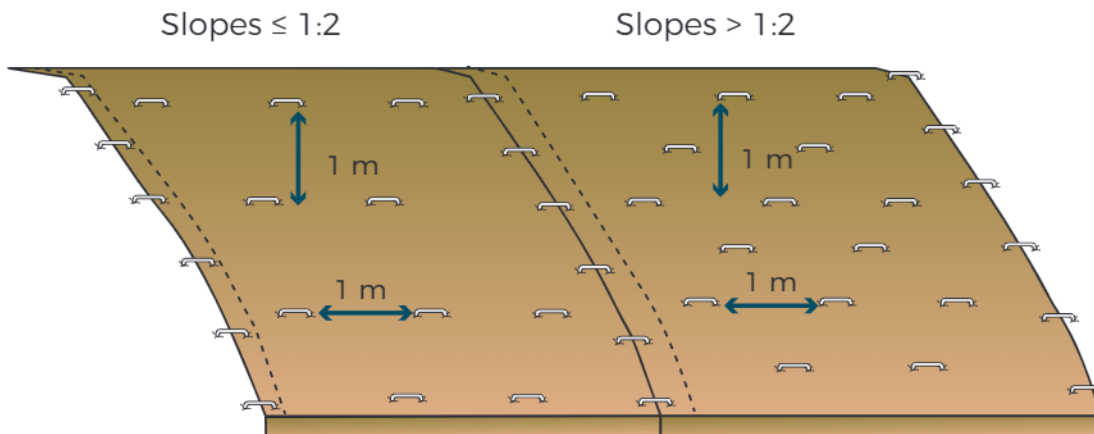
The material is designed to allow seeds to germinate successfully and grow through the matting providing permanent vegetative reinforcement.

Jute

- Planting into the mat requires a small slit to be cut (150 mm long) using a sharp blade or scissors. Do not cut a circular hole for your seedlings, as this may facilitate weed growth.
- Remove enough soil from under the material to plant the seedling. Ensure that excess soil does not come into contact with the top surface of the matting to reduce the spread of weed seed.

PINNING

- Minimum pinning frequency is shown in the figures below.
- Additional pinning may be required in undulating soil with low spots to ensure intimate contact between mat and soil.
- On steeper batters, flooding areas or areas prone to high wind and unstable subsoils, a higher pinning rate should be used.
- Pinning is extremely important to the long-term stability of the matting. Insufficient pinning may result in the material lifting in the wind or under water flow.
- Pin type and size will depend on site conditions, soil depth, compaction, wind and water flow. For suggested pins sizes, please refer to the designer. Contact Geofabrics for options available in your area.



Geofabrics and Grassroots are trademarks Geofabrics Australasia. Biomac is a registered trademark of Officine Maccaferri.

IMPORTANT NOTICE - DISCLAIMER - The information contained in this brochure is general in nature. In particular the content of this brochure does not take account of specific conditions that may be present at your site. Site conditions may alter the performance and longevity of the product and in extreme cases may make the product wholly unsuitable. Actual dimensions and performance may vary. If your project requires accuracy to a certain specified tolerance level you must advise us before ordering the product from us. We can then advise whether the product will meet the required tolerances. Where provided, installation instructions cover installation of product in site conditions that are conducive to its use and optimum performance. If you have any doubts as to the installation instructions or their application to your site, please contact us for clarification before commencing installation. This brochure should not be used for construction purposes and in all cases we recommend that advice be obtained from a suitably qualified consulting engineer or industry specialist before proceeding with installation. © Copyright held by Geofabrics Australasia Pty Ltd. All rights are reserved and no part of this publication may be copied without prior permission. Published April 2019.